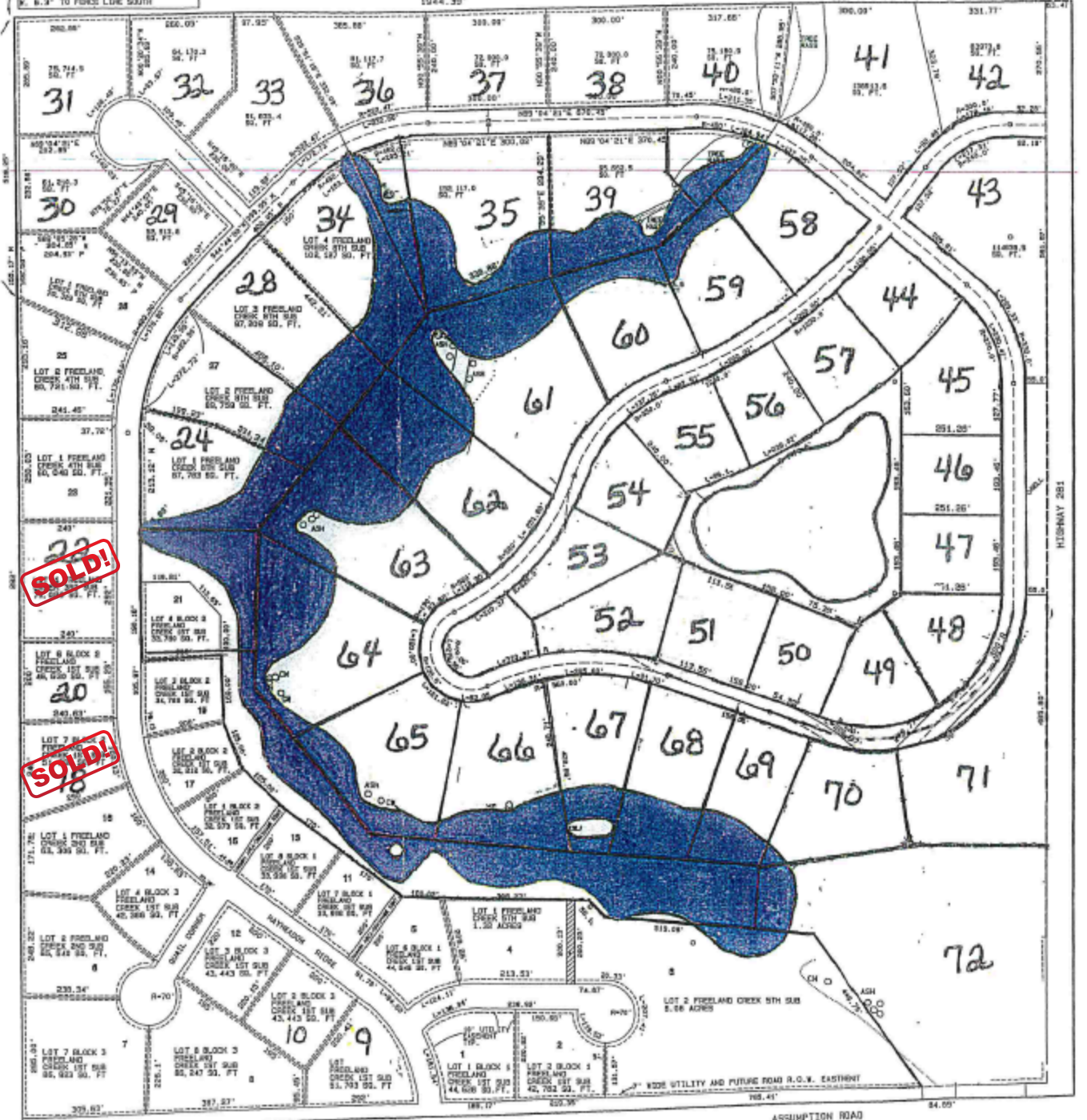


1/4 3-8-104 PG. 3/4 P.D.M.
S.W. 1/4 TO N.E. 1/4, S. FACE OF P. 4' AS
S. 1/4 TO S. 1/4
P. 3-1 TO P. 3-2
P. 3-1 TO P. 3-2

N09°04'21"E 2639.63' W 2639.94' R
PARKS 2005

1044.30'



SOLD!

SOLD!

N07°56'40"E 2616.73'

ASSUMPTION ROAD

84.00'